

# 2022 ANNUAL REPORT





# CONTENTS

About the ISPE Foundation.....	3
ISPE Foundation Mission .....	3
2022 At-a-Glance .....	4
ISPE Foundation Board of Directors .....	5
ISPE Four Key Pillars	
ISPE Global Knowledge Exchange.....	6
Workforce Diversity.....	7
Scholarships and Grants.....	8
Greatest Needs.....	9
Financials.....	10

## MESSAGE FROM THE ISPE FOUNDATION

Every innovative advancement made today has the potential to help the next patient diagnosed tomorrow. The ISPE Foundation strives to inspire and facilitate knowledge exchange and opportunities for our best and brightest to make a difference worldwide.

The ISPE Foundation remains committed to providing financial support for education, professional development, and research to build a diverse, capable workforce that drives solutions to global pharmaceutical industry challenges for the benefit of patients and public health. Through our strategic pillars - Global Knowledge Exchange, Workforce Diversity, Scholarships and Grants, and Greatest Needs - the ISPE Foundation supports programs that improve public health on a global scale. This year, we are thrilled to build upon our efforts with the introduction of Technology Without Borders. This new program was created to ensure the availability of essential ISPE Guidance Documents and associated training to emerging economies; specifically universities, regulatory authorities, and organizations who would otherwise have limited or no access to the pharmaceutical industry’s best practices and standards.

Thank you to our donors, volunteers, and stakeholders for believing in the ISPE Foundation. We could not accomplish our goals without your support and enthusiasm. We made some exciting strides in 2022 and cannot wait to achieve even bigger goals in 2023.

Thomas B. Hartman  
President and CEO  
ISPE

Antonio Moreira, PhD  
2022-2024 Board Chair  
ISPE Foundation





## ABOUT THE ISPE FOUNDATION

As the philanthropic arm of ISPE, the ISPE Foundation is a tax-exempt 501(c)(3) organization that provides support for ISPE programs. We create and fund programs that support the pharmaceutical industry's efforts to prevent drug shortages and deliver transformational medicines to patients.

### The ISPE Foundation Has Four Key Pillars

- ISPE Global Knowledge Exchange
- Workforce Diversity
- Scholarships and Grants
- Greatest Needs

Our biggest challenge is also our biggest opportunity: people. We need the best and the brightest from all corners of the globe working on the most critical industry challenges we face today and will continue to face in the years to come.

Funded by the generosity of our donors, the ISPE Foundation champions programs that create opportunity, diversity, and success within the global pharmaceutical industry.

## MISSION STATEMENT

FUELING GLOBAL HEALTH EQUITY  
BY FOSTERING ACCESS TO  
KNOWLEDGE AND DIVERSE TALENT

# 2022 AT-A-GLANCE

- Secured funding to enable launch of the Technology Without Borders program, created to ensure the availability of essential ISPE guidance documents and associated training to emerging economies
- Awarded 31 professional development Grants for students to attend ISPE conferences, facilitating hundreds of hours of knowledge sharing
- Placed five interns through the ISPE Foundation Diversity Internship Program through the support of Gilead Sciences, Inc. and WuXi Biologics, with nine being placed since Program inception
- Conducted the 1st Annual ISPE Foundation Golf Tournament, as well as the 13th Annual Foundation 5K Run/Walk event





# 2021-2022 ISPE FOUNDATION BOARD

## Executive Committee

### CHAIR

**Antonio R. Moreira, PhD**

Vice Provost, Academic Affairs  
University of Maryland, Baltimore County

### TREASURER

**Scott W. Billman**

Vice President, Engineering,  
Pharmaceutical Services  
Thermo Fisher Scientific

### SECRETARY

**Christopher J. Reid**

CEO  
Integrity Solutions Limited

### EX OFFICIO NON-VOTING MEMBER

**Thomas B. Hartman**

President and CEO  
ISPE

## Directors

**Vivianne J. Arencibia**

Vice President, Global Quality Systems and  
Compliance  
Moderna

**Nasir Egal**

Vice President, Quality US  
Quotient Sciences, US

**Teresa Minero**

Founder and CEO  
LifeBee

**Alice Redmond, PhD**

Vice President, European Operations  
CAI

**Michael L. Rutherford**

Executive Director, Computer Systems Quality  
and Data Integrity  
Syneos Health

**Hirofumi Suzuki, PhD**

Product Supply Japan,  
Head of Product Supply Coordination  
Bayer Yakuhin Ltd

**Timothy J.N. Watson, PhD**

Executive Director and Team Leader,  
CMC Advisory Office  
Gilead

**EX-OFFICIO**

**Jeff Biskup, PE**

CEO and Chairman of the Board  
CRB

PILLAR:

# ISPE GLOBAL KNOWLEDGE EXCHANGE

ISPE Global Knowledge Exchange makes available pharmaceutical manufacturing best practices to new and emerging markets, helping to implement processes in line with regulatory requirements that deliver better outcomes. The following programs aim to achieve these goals.

## Technology Without Borders

Sharing information and knowledge in the pharmaceutical industry is critical to the industry's success in bringing transformative medicines to patients worldwide. Companies in emerging economy markets often struggle to maintain established industry standards. It is crucial that their workforce managing and operating facilities and systems, as well as local regulatory authorities, are equipped with the knowledge to ensure application of the industry's universal standards and best practices related to manufacturing processes, harmonization of regulations, and production quality.

The Technology Without Borders program was created to make available essential industry guidance documents and associated training to emerging economies, specifically regulatory authorities and organizations who would otherwise have limited or no access to the pharmaceutical industry's best practices and standards. In partnership with fellow philanthropically minded supporters, the ISPE Foundation provides funding to enable access to ISPE guidance documents and associated professional development to these target markets, and where necessary in local languages.

## Translations

The ISPE Foundation supports the industry's need to bring new effective medicines to new markets, deliver manufacturing processes that harmonize with regulations, and provide a high production quality through the transfer of professional knowledge, standards, and expertise to emerging markets.

Key efforts include making ISPE's highly regarded Guidance Documents available to emerging markets and offering funding, in partnership with industry, to support the translation of ISPE Guidance Documents into local languages and dialects.



*"The ISPE Foundation is taking a bold stance to remove barriers to entry in the engineering profession through education equity, which is the fastest way to achieve eventual economic dignity. By curating and translating standards, guidelines, and best practices, the ISPE Foundation is working to create a level playing field and inspiring a new generation of talent that we hope will eventually translate into value for patients. The Technology Without Borders initiative provides translated ISPE Guidance Documents and curricula of training to catalyze curiosity and allow people to look at biotechnology through a different lens."*

**Joydeep Ganguly**  
Senior Vice President, Corporate Operations  
Gilead Sciences



PILLAR:

# WORKFORCE DIVERSITY

Workforce Diversity is critical to ensure the continued growth and success of the global pharmaceutical industry through the availability of a diverse and capable workforce. We advance this pillar through the following programs.

## **ISPE Foundation Diversity Internship Program**

An unprecedented pace and scale of disruption and new business models like personalized medicine and new product modalities, such as cell and gene therapy, are significantly impacting pharmaceutical industry operations. Without intervention, patients' safe and continuous supplies of quality medicines are in jeopardy. The ISPE Foundation is working to ensure that recent graduates entering the industry, underrepresented groups, and our current workforce have access to cutting-edge technical knowledge.

The ISPE Foundation Diversity Internship Program promotes a more diverse workforce by providing world-class internship opportunities and opening doors to future employment opportunities for groups typically underrepresented in the industry.

## **Women in Pharma®**

The ISPE Foundation is dedicated to creating greater equality, opportunity, and corporate success by increasing the number of people from underrepresented groups in the pharmaceutical industry. To meet this challenge, the ISPE Foundation has established Women in Pharma® to provide professional education and foster mentorship and networking opportunities for women.

Women in Pharma® provides a forum through which professionals in the pharmaceutical industry can connect and collaborate on technical and career advancement. It also provides opportunities for women and underrepresented groups to speak on pharmaceutical issues, including delivering technical presentations and contributing to panel discussions. A community of Women in Pharma® mentors, resources across all levels, and educational sessions help enable career success and work-life balance.



*“As we collaborate, we will break down barriers, tackle unconscious bias, and pave the way for a more inclusive future through the collective input of women from all cultures and backgrounds. ISPE Foundation supporters are the unsung heroes, paving the way for all little girls and young women to discover their passion for science, engineering, and mathematics, while improving patients’ lives. Join us in shaping the future of our industry through Women in Pharma®.”*

### **Vivianne Arencibia**

*Vice President, Global Quality Systems and Compliance  
Moderna*

PILLAR:

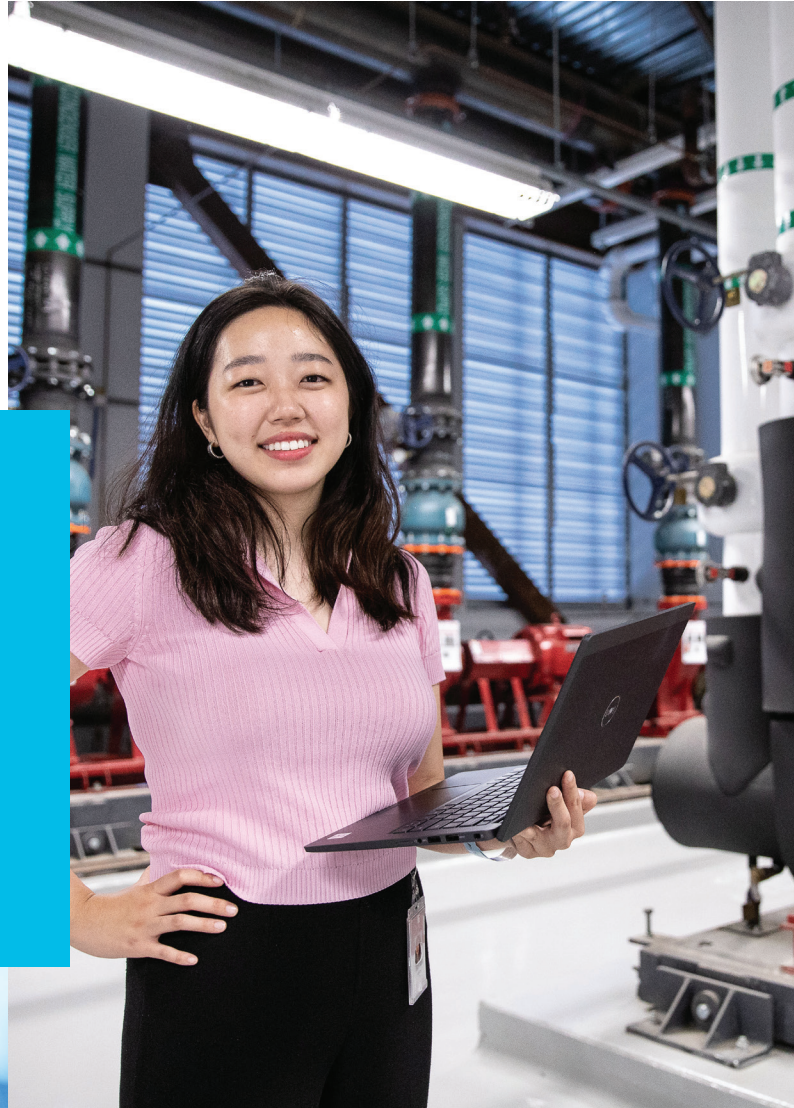
# SCHOLARSHIPS AND GRANTS

Scholarships and grants provide an opportunity for talented students and recent graduates to attend ISPE conferences and events to strengthen their technical knowledge and develop a professional network. The Foundation helps provide scholarships and grants to broaden access to cutting-edge technical knowledge and education.

*"I feel incredibly lucky to be able to learn from the company that was in the forefront for treatments for HIV, and now developed the first medicine approved to treat COVID-19."*

**Abbey Kim**

ISPE Foundation Diversity  
Internship Program  
(Gilead Sciences, Inc.)  
San Jose State University  
Graduate May 2021 with a BS in Chemical  
Engineering





PILLAR:

# GREATEST NEEDS

The Greatest Needs Fund is a vital source of support for the ISPE Foundation and its mission to fuel global health equity by fostering access to knowledge and nurturing diverse talent. By donating to this fund, you enable the Foundation to respond swiftly and strategically to the most urgent and emerging needs of the pharmaceutical industry and the patients it serves. Whether it is providing scholarships and grants for students and

recent graduates, promoting workforce diversity and inclusion, or promoting best practices towards quality pharmaceutical products, the Greatest Needs Fund allows the Foundation to allocate resources where they are most needed and impactful. Your generous contribution to this fund will help the Foundation achieve its vision of a world where everyone benefits from access to safe, effective, and affordable medicines.



# FINANCIALS

ISPE FOUNDATION STATEMENT OF FINANCIAL POSITION AS OF	DECEMBER 31, 2022	DECEMBER 31, 2021
<b>CURRENT ASSETS</b>		
Wells Fargo Checking Account	149,507	63,935
Wells Fargo Savings Account	302,583	340,206
<b>CASH</b>	<b>452,090</b>	<b>404,141</b>
Accounts Receivable	65,000	100
<b>ACCOUNTS RECEIVABLE</b>	<b>65,000</b>	<b>100</b>
<b>PREPAIDS</b>	<b>0</b>	<b>0</b>
<b>NON-CURRENT ASSETS</b>		
Property—Computer Equipment and Software	40,438	40,438
Accumulated Depreciation	(35,438)	(29,438)
<b>PROPERTY and EQUIPMENT</b>	<b>5,000</b>	<b>11,000</b>
<b>TOTAL ASSETS</b>	<b>\$522,090</b>	<b>\$415,241</b>
<b>CURRENT LIABILITIES</b>		
Accounts Payable	3,549	0
<b>ACCOUNTS PAYABLE</b>	<b>3,549</b>	<b>0</b>
<b>OTHER CURRENT LIABILITIES</b>	<b>0</b>	<b>0</b>
Employee Benefit Liability	5,566	0
Year-End Accrued Salary Liability	11,651	0
Tax Liability	1,317	0
Due To (From) ISPE	53,015	70,910
<b>ACCRUED EXPENSES</b>	<b>71,550</b>	<b>70,910</b>
Deferred Income	138,889	0
<b>DEFERRED INCOME</b>	<b>138,889</b>	<b>0</b>
<b>TOTAL LIABILITIES</b>	<b>\$213,988</b>	<b>\$70,910</b>
Net Assets—Prior Year	344,331	281,549
Change in Net Assets—Current Year	(36,229)	62,782
<b>TOTAL NET ASSETS</b>	<b>308,102</b>	<b>344,331</b>
<b>TOTAL LIABILITIES and NET ASSETS</b>	<b>\$522,090</b>	<b>\$415,241</b>
<b>ISPE FOUNDATION STATEMENT OF ACTIVITIES</b>		
<b>REVENUE</b>		
Women In Pharma	3,259	6,152
Professional Development Grants	104	0
General	274,718	343,472
In Kind	0	2,800
Translations	73,767	5,000
Total	351,848	357,424
Interest Income	39	37
<b>TOTAL REVENUE</b>	<b>351,887</b>	<b>357,461</b>
<b>EXPENSE</b>		
Women in Pharma	0	172
Professional Development Grants	21,478	43,677
Travel Grants	0	7,505
IFDIP	32,205	0
Translations	55,000	0
General	279,433	243,326
<b>TOTAL EXPENSE</b>	<b>388,116</b>	<b>294,680</b>
<b>NET INCOME</b>	<b>\$(36,229)</b>	<b>\$62,782</b>





To learn more contact about our mission and philanthropic pillars, please contact Tori Johnson, Director Development and Foundations Operations at [tjohnson@ispe.org](mailto:tjohnson@ispe.org)

**[ISPEFoundation.org](https://www.ispefoundation.org)**

ISPE Global Headquarters  
6110 Executive Blvd., Suite 600  
North Bethesda, MD 20852 USA  
T 301-364-9201 F 240-204-6024